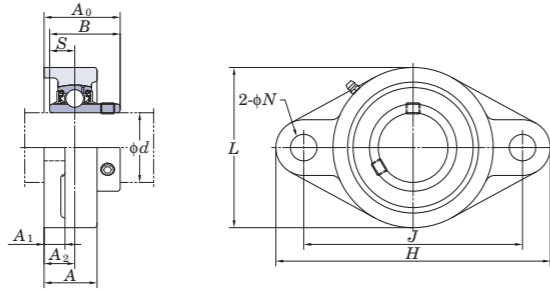
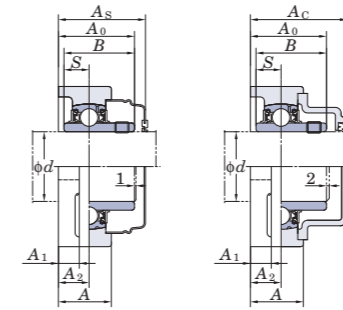


UCFL
Cylindrical bore (with set screws)
d 12 ~ (45) mm



With Pressed Steel Cover With Cast Iron Cover



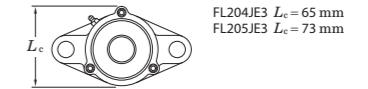
Variations of tolerance of distance from mounting surface to center of spherical bore (ΔA_{2a}) and tolerance of position of bolt hole (X)

Housing No.			ΔA_{2a}	X
FL204~FL210	FLX05~FLX10	FL305~FL310	±0.5	0.7
FL211~FL218	FL311~FL324		±0.8	1

Variations of tolerance of bolt hole diameter (ΔN_b)

Housing No.			ΔN_b
FL204~FL218	FLX05~FLX10	FL305~FL311	±0.2
		FL312~FL324	±0.3

Forms and dimensions of L_c of FL204JE3 and FL205JE3 (housing with cast iron cover) are shown below.

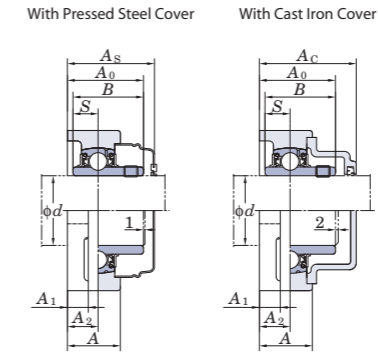
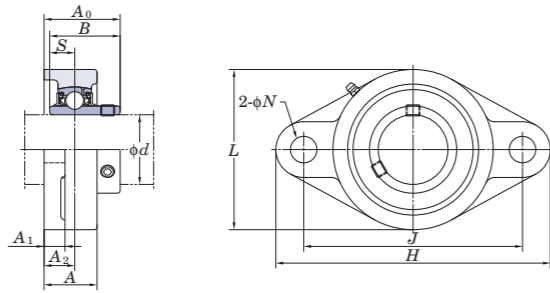


Shaft Dia. mm inch	Dimensions inch mm	Bolt Size inch mm	Standard			Mass kg	Basic Load Ratings kN		Factor f_0	With Pressed Steel Cover				With Cast Iron Cover					
			Unit No.	Housing No.	Bearing No.		Unit No. Open Type	Unit No. Closed Type		Dimension mm inch	Mass kg	Unit No. Open Type	Unit No. Closed Type	Dimension mm inch	Mass kg				
12			UCFL201		UC201	0.50				UCFL201C	UCFL201D	37.5	1 15/32	0.50					
15			UCFL202		UC202	0.48				UCFL202C	UCFL202D	37.5	1 15/32	0.48					
17			UCFL203		UC203	0.47				UCFL203C	UCFL203D	37.5	1 15/32	0.47					
20			UCFL204		UC204	0.45				UCFL204C	UCFL204D	37.5	1 15/32	0.45	UCFL204FC	UCFL204FD	46	1 13/16	0.6
25			UCFL205-14		UC205-14	0.64													
			UCFL205-15		UC205-15	0.64													
			UCFL205		UC205	0.64	14.0	7.85	13.9	UCFL205C	UCFL205D	40.5	1 19/32	0.64	UCFL205FC	UCFL205FD	49	1 15/16	0.83
			UCFL205-16		UC205-16	0.64													
30			UCFLX05	FLX05	UCX05	1.1	19.5	11.3	13.9	UCFLX05C	UCFLX05D	44.5	1 3/4	1.1					
			UCFLX05-16		UCX05-16	1.1													
			UCFL305		UC305	1.1									UCFL305C	UCFL305D	54	2 1/8	1.4
			UCFL305-16		UC305-16	1.1	21.2	10.9	12.6										
35			UCFL206-18		UC206-18	0.93													
			UCFL206		UC206	0.93	19.5	11.3	13.9	UCFL206C	UCFL206D	44.5	1 3/4	0.93	UCFL206FC	UCFL206FD	53	2 3/32	1.2
			UCFL206-19		UC206-19	0.93													
			UCFL206-20		UC206-20	0.93													
40			UCFLX06	FLX06	UCX06	1.5				UCFLX06C	UCFLX06D	49	1 15/16	1.5					
			UCFLX06-19		UCX06-19	1.5	25.7	15.4	13.9										
			UCFLX06-20		UCX06-20	1.5													
			UCFL306		UC306	1.5	26.7	15.0	13.3						UCFL306C	UCFL306D	59	2 5/16	1.8
45			UCFL207-20		UC207-20	1.2													
			UCFL207-21		UC207-21	1.2													
			UCFL207-22		UC207-22	1.2	25.7	15.4	13.9										
			UCFL207		UC207	1.2				UCFL207C	UCFL207D	49	1 15/16	1.2	UCFL207FC	UCFL207FD	58	2 9/32	1.6
50			UCFLX07-22		UCX07-22	1.9													
			UCFLX07		UCX07	1.9	29.1	17.8	14.0	UCFLX07C	UCFLX07D	55.5	2 3/16	1.9					
			UCFLX07-23		UCX07-23	1.9													
			UCFL307		UC307	1.8	33.4	19.3	13.2						UCFL307C	UCFL307D	64	2 17/32	2.2
55			UCFL208-24		UC208-24	1.6													
			UCFL208-25		UC208-25	1.6	29.1	17.8	14.0										
			UCFL208		UC208	1.6				UCFL208C	UCFL208D	55.5	2 3/16	1.6	UCFL208FC	UCFL208FD	64	2 17/32	2.0
			UCFLX08-24		UCX08-24	2.1	34.1	21.3	14.0	UCFLX08C	UCFLX08D	56.5	2 7/32	2.1					
60			UCFL308-24		UC308-24	2.5													
			UCFL308		UC308	2.5	40.7	24.0	13.2						UCFL308C	UCFL308D	71	2 25/32	3.0
			UCFL209-26		UC209-26	1.9													
			UCFL209-27		UC209-27	1.9													
65			UCFL209-28		UC209-28	1.9	34.1	21.3	14.0										
			UCFL209		UC209	1.9				UCFL209C	UCFL209D	56.5	2 7/32	1.9	UCFL209FC	UCFL209FD	66	2 19/32	2.3
			UCFLX09-27		UCX09-27	2.4													
			UCFLX09-28		UCX09-28	2.4	35.1	23.3	14.4	UCFLX09C	UCFLX09D	60	2 3/8	2.4					

Remarks 1. In Part No. of unit and units with covers, fitting codes follow bore diameter numbers. (See Table 10.5 in P.62.)
2. Part No. of applicable grease fittings are shown below.
A-1/4-28UNF 201~210, X05~X09, 305~308
A-R1/8 211~218, X10, 309~324

3. As for the triple seal type product (from 201 to 205 are the double seal type products), suffix code L3 (or L2) follows the Part No. of unit or bearing. (Example of Part No.: UCFL206JL3, UC206L3)
4. For the dimensions and forms of applicable bearings, see the dimensional tables of ball bearing for unit.
5. Housings of nodular graphite cast iron are also available.

UCFL
Cylindrical bore (with set screws)
d (45) ~ (90) mm



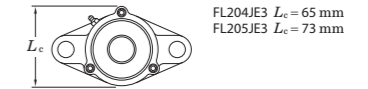
Variations of tolerance of distance from mounting surface to center of spherical bore (ΔA_{2a}) and tolerance of position of bolt hole (X)

Housing No.			ΔA_{2a}	X
FL204~FL210	FLX05~FLX10	FL305~FL310	±0.5	0.7
FL211~FL218		FL311~FL324	±0.8	1

Variations of tolerance of bolt hole diameter (ΔN_b)

Housing No.			ΔN_b
FL204~FL218	FLX05~FLX10	FL305~FL311	±0.2
		FL312~FL324	±0.3

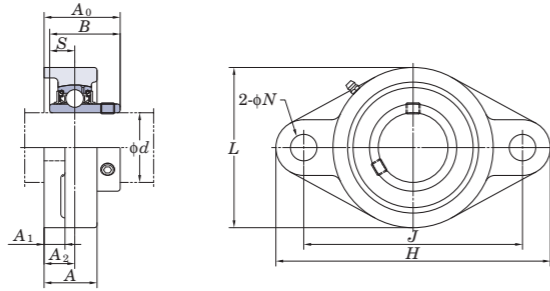
Forms and dimensions of L_c of FL204JE3 and FL205JE3 (housing with cast iron cover) are shown below.



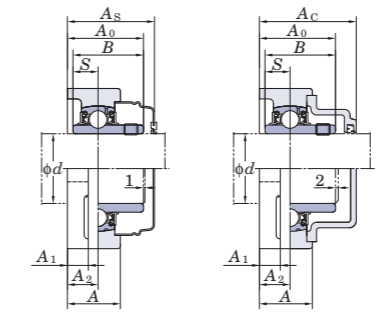
Shaft Dia. mm inch	Dimensions inch mm	Bolt Size inch mm	Standard			Mass kg	Basic Load Ratings kN		Factor f_0	With Pressed Steel Cover			With Cast Iron Cover							
			Unit No.	Housing No.	Bearing No.		Unit No. Open Type	Unit No. Closed Type		Dimension mm inch	Mass kg	Unit No. Open Type	Unit No. Closed Type	Dimension mm inch	Mass kg					
45	1 3/4	7/8	UCFL309-28	FL309	UC309-28	3.5	48.9	29.5	13.3	-	-	-	-	-	-	-	-			
	230	M22	UCFL309		UC309	3.5				UCFL309C	UCFL309D	76	3	4.1						
50	1 7/8	5/8	UCFL210-30	FL210	UC210-30	2.2	35.1	23.3	14.4	-	-	-	-	-	-	-	-			
	1 15/16	M16	UCFL210-31		UC210-31	2.2				UCFL210C	UCFL210D	59	2 5/16	2.2	UCFL210FC	UCFL210FD	70.5	2 25/32	2.7	
	2		UCFL210		UC210	2.2				-	-	-	-	-	-	-	-	-	-	-
	1 15/16	M16	UCFL210-32		UC210-32	2.2				-	-	-	-	-	-	-	-	-	-	-
55	2	5/8	UCFLX10-31	FLX10	UCX10-31	3.8	43.4	29.4	14.4	-	-	-	-	-	-	-	-			
	1 15/16	M16	UCFLX10		UCX10	3.8				UCFLX10C	UCFLX10D	64	2 17/32	3.8	-	-	-	-	-	
	2		UCFLX10-32		UCX10-32	3.8				-	-	-	-	-	-	-	-	-	-	
60	2 1/8	M16	UCFL211-32	FL211	UC211-32	3.3	43.4	29.4	14.4	-	-	-	-	-	-	-	-			
	2 1/8	M16	UCFL211-34		UC211-34	3.3				UCFL211C	UCFL211D	63	2 15/32	3.3	UCFL211FC	UCFL211FD	74.5	2 15/16	3.9	
	2 3/16		UCFL211		UC211	3.3				-	-	-	-	-	-	-	-	-	-	
	2 3/16	M22	UCFL211-35		UC211-35	3.3				-	-	-	-	-	-	-	-	-	-	
65	2 1/4	7/8	UCFL311-32	FL311	UC311-32	5.3	71.6	45.0	13.2	-	-	-	-	-	-	-	-			
	2 1/2	M22	UCFL311		UC311	5.3				UCFL311C	UCFL311D	87	3 7/16	6.2	-	-	-	-		
	2 3/16		UCFL311-35		UC311-35	5.3				-	-	-	-	-	-	-	-	-		
	2 1/2	M20	UCFL212-36		UC212-36	4.2				-	-	-	-	-	-	-	-	-		
70	2 3/8	M20	UCFL212	FL212	UC212	4.2	52.4	36.2	14.4	UCFL212C	UCFL212D	73.5	2 29/32	4.2	UCFL212FC	UCFL212FD	86	3 3/8	5.0	
	2 7/16		UCFL212-38		UC212-38	4.2				-	-	-	-	-	-	-	-	-		
	2 7/16	M27	UCFL212-39		UC212-39	4.2				-	-	-	-	-	-	-	-	-		
	2 7/16		UCFL312		UC312	6.5				-	-	-	-	-	-	-	-	-		
75	2 1/2	3/4	UCFL213-40	FL213	UC213-40	5.1	57.2	40.1	14.4	-	-	-	-	-	-	-	-			
	2 1/2	M20	UCFL213		UC213	5.1				UCFL213C	UCFL213D	74.5	2 15/16	5.1	UCFL213FC	UCFL213FD	87	3 7/16	5.9	
	2 1/2		UCFL313-40		UC313-40	8.5				-	-	-	-	-	-	-	-	-		
	2 1/2	M27	UCFL313		UC313	8.5				UCFL313C	UCFL313D	94	3 11/16	9.6	-	-	-	-		
80	2 3/4	3/4	UCFL214-44	FL214	UC214-44	5.7	62.2	44.1	14.5	-	-	-	-	-	-	-	-			
	2 3/4	M20	UCFL214		UC214	5.7				UCFL214C	UCFL214D	80.5	3 5/32	5.7	UCFL214FC	UCFL214FD	93	3 21/32	6.6	
	2 3/4		UCFL314-44		UC314-44	9.7				-	-	-	-	-	-	-	-	-		
	2 3/4	M30	UCFL314		UC314	9.7				UCFL314C	UCFL314D	98	3 27/32	10.8	-	-	-	-		
85	2 15/16	3/4	UCFL215-47	FL215	UC215-47	6.4	67.4	48.3	14.5	-	-	-	-	-	-	-	-			
	3	M20	UCFL215		UC215	6.4				UCFL215C	UCFL215D	83.5	3 9/32	6.4	UCFL215FC	UCFL215FD	96	3 25/32	7.4	
	3		UCFL215-48		UC215-48	6.4				-	-	-	-	-	-	-	-	-		
	2 15/16	M30	UCFL315-47		UC315-47	11.3				-	-	-	-	-	-	-	-	-		
90	3 1/8	7/8	UCFL315	FL315	UC315	11.3	113	77.2	13.2	-	-	-	-	-	-	-	-			
	3 1/8	M22	UCFL315-48		UC315-48	11.3				UCFL315C	UCFL315D	106	4 3/16	12.6	-	-	-	-		
	3 1/8		UCFL216-50		UC216-50	7.8				-	-	-	-	-	-	-	-	-		
	3 1/8	M33	UCFL216		UC216	7.8				UCFL216C	UCFL216D	88.5	3 15/32	7.8	UCFL216FC	UCFL216FD	103	4 1/16	9.0	
95	3 1/2	1 1/4	UCFL316	FL316	UC316	14.4	123	86.7	13.3	-	-	-	-	-	-	-	-			
	3 1/2	M33	UCFL316		UC316	14.4				UCFL316C	UCFL316D	107	4 7/32	15.8	-	-	-	-		
	3 1/4		UCFL217-52		UC217-52	9.8				-	-	-	-	-	-	-	-	-		
	3 1/4	M22	UCFL217		UC217	9.8				UCFL217C	UCFL217D	92.5	3 21/32	9.8	UCFL217FC	UCFL217FD	107	4 7/32	11.2	
100	3 3/4	1 1/4	UCFL317	FL317	UC317	16.0	133	96.8	13.3	-	-	-	-	-	-	-	-			
	3 3/4	M33	UCFL317		UC317	16.0				UCFL317C	UCFL317D	117	4 19/32	17.6	-	-	-	-		
	3 1/2		UCFL218-56		UC218-56	12.3				-	-	-	-	-	-	-	-	-		
	3 1/2	M22	UCFL218		UC218	12.3				UCFL218C	UCFL218D	101.5	4	12.3	UCFL218FC	UCFL218FD	116	4 9/16	13.8	

Remarks 1. In Part No. of unit and units with covers, fitting codes follow bore diameter numbers. (See Table 10.5 in P.62).
 2. Part No. of applicable grease fittings are shown below.
 A-1/4-28UNF 201~210, X05~X09, 305~308
 A-R1/8 211~218, X10, 309~324
 3. As for the triple seal type product (from 201 to 205 are the double seal type products), suffix code L3 (or L2) follows the Part No. of unit or bearing. (Example of Part No. : UCFL206JL3, UC206L3)
 4. For the dimensions and forms of applicable bearings, see the dimensional tables of ball bearing for unit.
 5. Housings of nodular graphite cast iron are also available.

UCFL
Cylindrical bore (with set screws)
d (45) ~ (90) mm



With Pressed Steel Cover With Cast Iron Cover



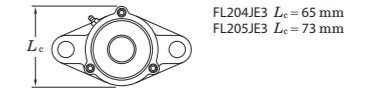
Variations of tolerance of distance from mounting surface to center of spherical bore (ΔA_{2a}) and tolerance of position of bolt hole (X)

Housing No.			ΔA_{2a}	X
FL204~FL210	FLX05~FLX10	FL305~FL310	± 0.5	0.7
FL211~FL218		FL311~FL324	± 0.8	1

Variations of tolerance of bolt hole diameter (ΔN_b)

Housing No.			ΔN_b
FL204~FL218	FLX05~FLX10	FL305~FL311	± 0.2
		FL312~FL324	± 0.3

Forms and dimensions of L_c of FL204JE3 and FL205JE3 (housing with cast iron cover) are shown below.

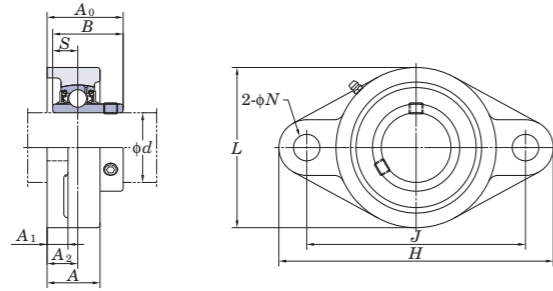


Shaft Dia. mm inch	Dimensions inch mm	Bolt Size inch mm	Standard			Mass kg	Basic Load Ratings kN		Factor f_0	With Pressed Steel Cover			With Cast Iron Cover								
			Unit No.	Housing No.	Bearing No.		Unit No. Open Type	Unit No. Closed Type		Dimension mm inch	Mass kg	Unit No. Open Type	Unit No. Closed Type	Dimension mm inch	Mass kg						
45	1 3/4	7/8	UCFL309-28	FL309	UC309-28	3.5	48.9	29.5	13.3	-	-	-	-	-	-	-	-				
	230	M22	UCFL309		UC309	3.5				UCFL309C	UCFL309D	76	3	4.1							
50	1 7/8	5/8	UCFL210-30	FL210	UC210-30	2.2	35.1	23.3	14.4	-	-	-	-	-	-	-	-				
	1 15/16	M16	UCFL210-31		UC210-31	2.2				UCFL210C	UCFL210D	59	2 5/16	2.2	UCFL210FC	UCFL210FD	70.5	2 25/32	2.7		
	2		UCFL210		UC210	2.2				-	-	-	-	-	-	-	-	-	-	-	
	1 15/16	M16	UCFL210-32		UC210-32	2.2				-	-	-	-	-	-	-	-	-	-	-	
50	1 15/16	5/8	UCFLX10-31	FLX10	UCX10-31	3.8	43.4	29.4	14.4	-	-	-	-	-	-	-	-				
	2	M16	UCFLX10		UCX10	3.8				UCFLX10C	UCFLX10D	64	2 17/32	3.8	-	-	-	-	-		
	2		UCFLX10-32		UCX10-32	3.8				-	-	-	-	-	-	-	-	-	-	-	
55	2	7/8	UCFL310	FL310	UC310	4.4	62.0	38.3	13.2	-	-	-	-	UCFL310C	UCFL310D	83	3 9/32	5.2			
	2 1/8	M16	UCFL211-32	FL211	UC211-32	3.3	43.4	29.4	14.4	-	-	-	-	-	-	-	-				
	2 1/8		UCFL211-34		UC211-34	3.3				UCFL211C	UCFL211D	63	2 15/32	3.3	UCFL211FC	UCFL211FD	74.5	2 15/16	3.9		
	2 3/16		UCFL211		UC211	3.3				-	-	-	-	-	-	-	-	-	-	-	
2 3/16	M22	UCFL211-35	UC211-35		3.3	-				-	-	-	-	-	-	-	-	-	-		
60	2 3/16	7/8	UCFL311-32	FL311	UC311-32	5.3	71.6	45.0	13.2	-	-	-	-	UCFL311C	UCFL311D	87	3 7/16	6.2			
	2	M22	UCFL311		UC311	5.3				-	-	-	-	-	-	-	-	-	-		
	2 3/16		UCFL311-35		UC311-35	5.3				-	-	-	-	-	-	-	-	-	-	-	
	2 1/4		UCFL212-36		FL212	UC212-36				4.2	52.4	36.2	14.4	-	-	-	-	-	-	-	-
2 3/8		UCFL212	UC212	4.2	UCFL212C	UCFL212D	73.5	2 29/32	4.2	UCFL212FC				UCFL212FD	86	3 3/8	5.0				
2 7/16		UCFL212-38	UC212-38	4.2	-	-	-	-	-	-				-	-	-	-	-			
2 7/16	M20	UCFL212-39	UC212-39	4.2	-	-	-	-	-	-				-	-	-	-	-			
65	2 1/2	3/4	UCFL312	FL312	UC312	6.5	81.9	52.2	13.2	-	-	-	-	UCFL312C	UCFL312D	95	3 3/4	7.7			
	2 7/16	M27	UCFL312-39		UC312-39	6.5				-	-	-	-	-	-	-	-	-	-		
	2 1/2		UCFL213-40		FL213	UC213-40				5.1	57.2	40.1	14.4	-	-	-	-	-	-	-	-
	2 1/2	M20	UCFL213		UC213	5.1				UCFL213C				UCFL213D	74.5	2 15/16	5.1	UCFL213FC	UCFL213FD	87	3 7/16
2 1/2		UCFL313-40	FL313	UC313-40	8.5	92.7	59.9	13.2	-	-				-	-	-	-	-	-		
2 3/4	M27	UCFL313	UC313	8.5	-				-	-				-	-	-	-	-	-	-	
2 3/4		UCFL214-44	FL214	UC214-44	5.7				62.2	44.1	14.5	-	-	-	-	-	-	-	-		
2 3/4	M20	UCFL214	UC214	5.7	UCFL214C							UCFL214D	80.5	3 5/32	5.7	UCFL214FC	UCFL214FD	93	3 21/32	6.6	
2 3/4		UCFL314-44	FL314	UC314-44	9.7	104	68.2	13.2				-	-	-	-	-	-	-	-		
2 3/4	M30	UCFL314	UC314	9.7	-							-	-	-	-	-	-	-	-	-	
2 15/16		UCFL215-47	FL215	UC215-47	6.4				67.4	48.3	14.5	-	-	-	-	-	-	-	-		
3	M20	UCFL215	UC215	6.4	UCFL215C							UCFL215D	83.5	3 9/32	6.4	UCFL215FC	UCFL215FD	96	3 25/32	7.4	
2 15/16		UCFL215-48	FL215	UC215-48	6.4	-	-	-				-	-	-	-	-	-	-			
3	M30	UCFL315-47	FL315	UC315-47	11.3	113	77.2	13.2				-	-	-	-	-	-	-	-		
3		UCFL315	UC315	11.3	-				-	-	-	-	-	-	-	-	-				
3		UCFL315-48	FL315	UC315-48	11.3				-	-	-	-	-	-	-	-	-	-			
3 1/8	M22	UCFL216-50	FL216	UC216-50	7.8				72.7	53.0	14.6	-	-	-	-	-	-	-	-		
3 1/8		UCFL216	UC216	7.8	UCFL216C	UCFL216D	88.5	3 15/32				7.8	UCFL216FC	UCFL216FD	103	4 1/16	9.0				
3 1/8		UCFL316	FL316	UC316	14.4	123	86.7	13.3				-	-	-	-	-	-	-	-		
3 1/8	M33	UCFL316	FL316	UC316	14.4							-	-	-	-	-	-	-	-	-	
3 1/4		UCFL217-52	FL217	UC217-52	9.8				84.0	61.9	14.5	-	-	-	-	-	-	-	-		
3 1/4	M22	UCFL217	FL217	UC217	9.8							UCFL217C	UCFL217D	92.5	3 21/32	9.8	UCFL217FC	UCFL217FD	107	4 7/32	11.2
3 1/4		UCFL317	FL317	UC317	16.0	133	96.8	13.3				-	-	-	-	-	-	-	-		
3 1/4	M33	UCFL317	FL317	UC317	16.0							-	-	-	-	-	-	-	-	-	
3 1/2		UCFL218-56	FL218	UC218-56	12.3				96.1	71.5	14.5	-	-	-	-	-	-	-	-		
3 1/2	M22	UCFL218	FL218	UC218	12.3							UCFL218C	UCFL218D	101.5	4	12.3	UCFL218FC	UCFL218FD	116	4 9/16	13.8

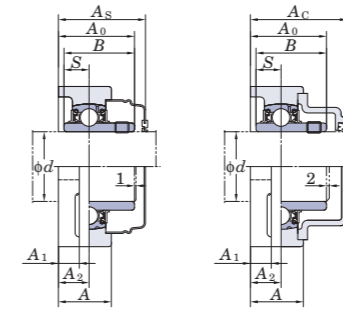
Remarks 1. In Part No. of unit and units with covers, fitting codes follow bore diameter numbers. (See Table 10.5 in P.62).
2. Part No. of applicable grease fittings are shown below.
A-1/4-28UNF 201~210, X05~X09, 305~308
A-R1/8 211~218, X10, 309~324

3. As for the triple seal type product (from 201 to 205 are the double seal type products), suffix code L3 (or L2) follows the Part No. of unit or bearing. (Example of Part No. : UCFL206JL3, UC206L3)
4. For the dimensions and forms of applicable bearings, see the dimensional tables of ball bearing for unit.
5. Housings of nodular graphite cast iron are also available.

UCFL
Cylindrical bore (with set screws)
 d (90) ~ 120 mm



With Pressed Steel Cover With Cast Iron Cover



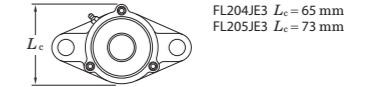
Variations of tolerance of distance from mounting surface to center of spherical bore (ΔA_{2b}) and tolerance of position of bolt hole (X)

Housing No.			ΔA_{2b}	X
FL204~FL210	FLX05~FLX10	FL305~FL310	± 0.5	0.7
FL211~FL218	FL311~FL324		± 0.8	1

Variations of tolerance of bolt hole diameter (ΔN_b)

Housing No.			ΔN_b
FL204~FL218	FLX05~FLX10	FL305~FL311	± 0.2
		FL312~FL324	± 0.3

Forms and dimensions of L_c of FL204JE3 and FL205JE3 (housing with cast iron cover) are shown below.

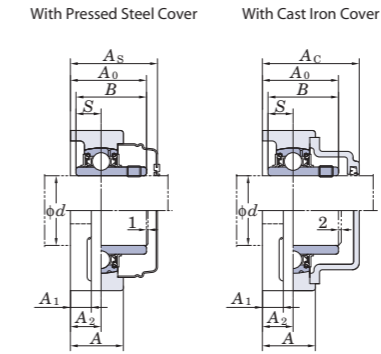
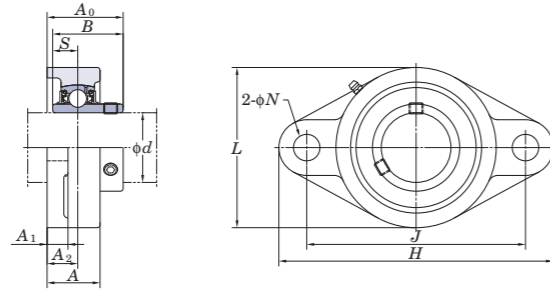


Shaft Dia. mm inch	Dimensions inch mm											Bolt Size inch mm	Standard			Mass kg	Basic Load Ratings kN		Factor f_0	With Pressed Steel Cover				With Cast Iron Cover			
	H	L	A	J	N	A_1	A_2	A_0	B	S	Unit No.		Housing No.	Bearing No.	Unit No. Open Type		Unit No. Closed Type	Dimension mm		Dimension inch	Mass kg	Unit No. Open Type	Unit No. Closed Type	Dimension mm	Dimension inch	Mass kg	
90 3 1/2	15 5/32	9 1/4	3	12 13/32	1 1/2	1 13/32	1 47/64	3 15/16	3.780	1.575	1 1/4	FL318	UC318-56 UC318	19.0 19.0	143	107	13.3	-	-	-	-	-	-	-	-	-	-
	385	235	76	315	38	36	44	100	96	40	M33							UCFL318	UCFL318C	UCFL318D	119	4 11/16	20.9				
95 -	15 15/16	9 27/32	3 11/16	13	1 39/64	1 9/16	2 21/64	4 3/4	4.055	1.614	1 3/8	FL319	UC319	24.6	153	119	13.3	-	-	-	-	-	-	-	-	-	-
	405	250	94	330	41	40	59	121	103	41	M36							UCFL319	UCFL319C	UCFL319D	140	5 1/2	26.8				
100 3 15/16 4	17 5/16	10 5/8	3 11/16	14 11/64	1 47/64	1 9/16	2 21/64	4 29/32	4.252	1.654	1 1/2	FL320	UC320 UC320-63 UC320-64	29.4 29.4 29.4	173	141	13.2	-	-	-	-	-	-	-	-	-	-
	440	270	94	360	44	40	59	125	108	42	M39							UCFL320	UCFL320C	UCFL320D	146	5 3/4	32.2				
	470	300	96	390	44	42	60	131	117	46	M39							UCFL320-63	-	-	-	-	-	-			
110 -	18 1/2	11 13/16	3 25/32	15 23/64	1 47/64	1 21/32	2 23/64	5 5/32	4.606	1.811	1 1/2	FL322	UC322	36.2	205	180	13.2	-	-	-	-	-	-	-	-	-	-
	470	300	96	390	44	42	60	131	117	46	M39							UCFL322	UCFL322C	UCFL322D	154	6 1/16	39.6				
120 -	20 15/32	13	4 11/32	16 59/64	1 27/32	1 7/8	2 9/16	5 1/2	4.961	2.008	1 5/8	FL324	UC324	51.6	207	185	13.5	-	-	-	-	-	-	-	-	-	-
	520	330	110	430	47	48	65	140	126	51	M42							UCFL324	UCFL324C	UCFL324D	163	6 13/32	56.4				

Remarks 1. In Part No. of unit and units with covers, fitting codes follow bore diameter numbers. (See Table 10.5 in P.62.)
2. Part No. of applicable grease fittings are shown below.
A-1/4-28UNF 201~210, X05~X09, 305~308
A-R1/8 211~218, X10, 309~324

3. As for the triple seal type product (from 201 to 205 are the double seal type products), suffix code L3 (or L2) follows the Part No. of unit or bearing. (Example of Part No.: UCFL206JL3, UC206L3)
4. For the dimensions and forms of applicable bearings, see the dimensional tables of ball bearing for unit.
5. Housings of nodular graphite cast iron are also available.

UCFL
Cylindrical bore (with set screws)
 d (90) ~ 120 mm



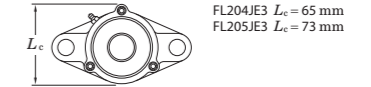
Variations of tolerance of distance from mounting surface to center of spherical bore (ΔA_{2b}) and tolerance of position of bolt hole (X)

Housing No.			ΔA_{2b}	X
FL204~FL210	FLX05~FLX10	FL305~FL310	± 0.5	0.7
FL211~FL218		FL311~FL324	± 0.8	1

Variations of tolerance of bolt hole diameter (ΔN_b)

Housing No.			ΔN_b
FL204~FL218	FLX05~FLX10	FL305~FL311	± 0.2
		FL312~FL324	± 0.3

Forms and dimensions of L_c of FL204JE3 and FL205JE3 (housing with cast iron cover) are shown below.



Shaft Dia. mm inch	Dimensions inch mm											Bolt Size inch mm	Standard			Mass kg	Basic Load Ratings kN		Factor f_0	With Pressed Steel Cover				With Cast Iron Cover				
	H	L	A	J	N	A_1	A_2	A_0	B	S	Unit No.		Housing No.	Bearing No.	Unit No. Open Type		Unit No. Closed Type	Dimension mm		Dimension inch	Mass kg	Unit No. Open Type	Unit No. Closed Type	Dimension mm	Dimension inch	Mass kg		
90 3 1/2	15 5/32	9 1/4	3	12 13/32	1 1/2	1 13/32	1 47/64	3 15/16	3.780	1.575	1 1/4	UCFL318-56 UCFL318	FL318	UC318-56 UC318	19.0	143	107	13.3	-	-	-	-	-	-	-	-	-	-
	385	235	76	315	38	36	44	100	96	40	M33								UCFL318C	UCFL318D	119	4 11/16	20.9					
95 -	15 15/16	9 27/32	3 11/16	13	1 39/64	1 9/16	2 21/64	4 3/4	4.055	1.614	1 3/8	UCFL319	FL319	UC319	24.6	153	119	13.3	-	-	-	-	-	-	-	-	-	-
	405	250	94	330	41	40	59	121	103	41	M36								UCFL319C	UCFL319D	140	5 1/2	26.8					
100 3 15/16 4	17 5/16	10 5/8	3 11/16	14 11/64	1 47/64	1 9/16	2 21/64	4 29/32	4.252	1.654	1 1/2	UCFL320 UCFL320-63 UCFL320-64	FL320	UC320 UC320-63 UC320-64	29.4	173	141	13.2	-	-	-	-	-	-	-	-	-	-
	440	270	94	360	44	40	59	125	108	42	M39								UCFL320C	UCFL320D	146	5 3/4	32.2					
110 -	18 1/2	11 13/16	3 25/32	15 23/64	1 47/64	1 21/32	2 23/64	5 5/32	4.606	1.811	1 1/2	UCFL322	FL322	UC322	36.2	205	180	13.2	-	-	-	-	-	-	-	-	-	-
	470	300	96	390	44	42	60	131	117	46	M39								UCFL322C	UCFL322D	154	6 1/16	39.6					
120 -	20 15/32	13	4 11/32	16 59/64	1 27/32	1 7/8	2 9/16	5 1/2	4.961	2.008	1 5/8	UCFL324	FL324	UC324	51.6	207	185	13.5	-	-	-	-	-	-	-	-	-	-
	520	330	110	430	47	48	65	140	126	51	M42								UCFL324C	UCFL324D	163	6 13/32	56.4					

Remarks 1. In Part No. of unit and units with covers, fitting codes follow bore diameter numbers. (See Table 10.5 in P.62.)
2. Part No. of applicable grease fittings are shown below.
A-1/4-28UNF 201~210, X05~X09, 305~308
A-R1/8 211~218, X10, 309~324

3. As for the triple seal type product (from 201 to 205 are the double seal type products), suffix code L3 (or L2) follows the Part No. of unit or bearing. (Example of Part No.: UCFL206JL3, UC206L3)
4. For the dimensions and forms of applicable bearings, see the dimensional tables of ball bearing for unit.
5. Housings of nodular graphite cast iron are also available.



41669 Date Street, Suite 101
Murrieta, CA 92562
phone: 951.677.7424
fax: 951.677.7334
email: sales@rainbowprecisionproducts.com
web: www.rainbowprecisionproducts.com